

DEPARTMENT OF  
AGRICULTURE

# PHILIPPINE COUNCIL FOR AGRICULTURE AND FISHERIES

## CREATION

Formed upon the consolidation of the National Agricultural and Fishery Council (NAFC) and the Livestock Development Council (LDC) in 2013.

## MISSION

In partnership with our Advisory Special Bodies and other stakeholders, we will zealously promote and strengthen capacities in participatory and collaborative governance.

## VISION

An apex policy-making body with strong, vibrant and visible private sector partners responsible for the attainment of a conducive policy environment towards a globally competitive and sustainable agriculture and fisheries sector.

**ACTS AS THE ADVISORY BODY OF THE DEPARTMENT OF AGRICULTURE TO ENSURE THE SUCCESS OF ITS PROGRAMS AND ACTIVITIES.**



## MFO 1

Agriculture and Fishery Policy Services



## PAP 1

Development and Coordination of Agriculture and Fisheries Policies



NAF COUNCIL

National Sectoral Committees and Strategic Concerns Committees

Agricultural and Fishery Council

## PAP 2

Planning, Monitoring and Knowledge Management



## PAP 3

Partnership Development



## MAJOR FINAL OUTPUT (MFO)

are goods or services mandated to primarily deliver to the bureaucracy and the general public external client through the implementation of programs, activities and projects (PAPs).

## PROGRAMS, ACTIVITIES AND PROJECTS (PAPs)

these contribute or drive the attainment of the MFO.



The  
**EXECUTIVE OFFICE**  
oversees PCAF's four divisions  
and its sections.  
It is composed of the Executive  
Director and Deputy Executive  
Director.



Administrative,  
Financial and  
Management  
Division

Planning,  
Monitoring and  
Knowledge  
Management  
Division

Partnership  
Development  
Division

Policy  
Development and  
Coordination Division

Accounting  
Section

Budget  
Section

Cash  
Section

General  
Services  
Section

Management  
Section

Human  
Resource  
Development  
Section

Planning and  
Programming  
Section

Project  
Development  
Section

Monitoring  
and  
Evaluation  
Section

Knowledge  
Management  
Section

Social  
Mobilization  
Section

Capacity  
Development  
Section

Volunteer  
Management  
Section

Council Support  
Coordination  
Section

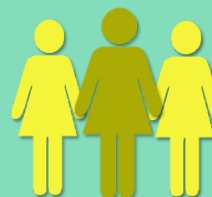
Sectoral Policy  
Development  
Section

Strategic  
Concerns  
Section

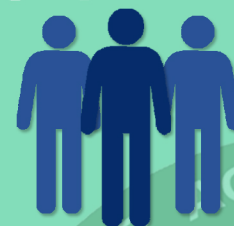
## EMPLOYEES PROFILE



**101**  
Approved  
Plantilla  
Positions



**62%**  
Female



**38%**  
Male

Total Number of Regular Employees as of  
September 2017  
Source: PCAF-HRDS

Apacible Hall,  
Department of  
Agriculture Compound,  
Elliptical Road, Diliman,  
Quezon City



[www.pcaf.da.gov.ph](http://www.pcaf.da.gov.ph)



(02) 920-4093  
(02) 920-4095



[pcaf.da@gmail.com](mailto:pcaf.da@gmail.com)



**DA.PCAF**



**DA\_PCAF**