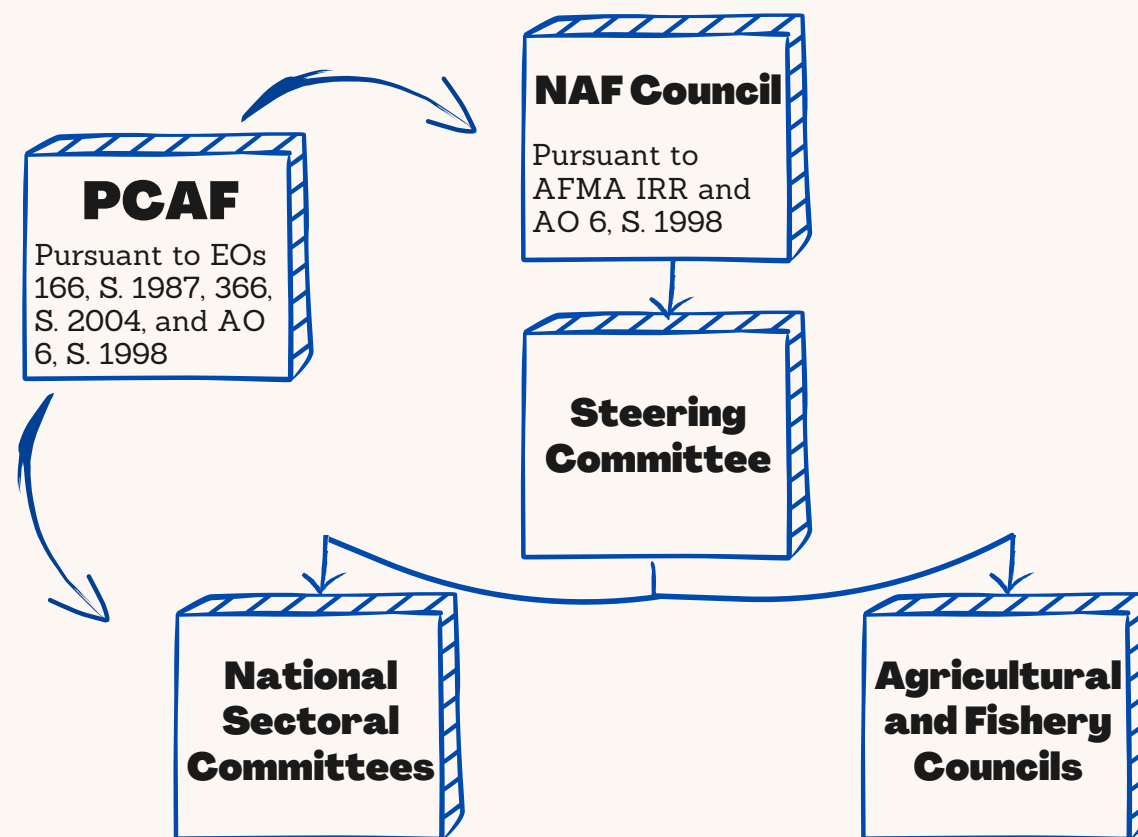


WHAT'S GOECB?

The Guidelines on the Engagement of Consultative Bodies (GoECB) intends to give clear advice and direction to all Agricultural and Fishery Councils (AFCs), as volunteer partner organizations, on the terms and conditions of their engagement with the Department of Agriculture and the Philippine Council for Agriculture and Fisheries.

Replacing the Omnibus Guidelines on the Engagement of AFCs (OGAEFC), the GoECB ultimately aims to contribute to the development of a policy environment supportive of the growth of agri-fishery enterprises, increased profitability, and improved lives of their respective organizations' members and communities.

ORGANIZATIONAL STRUCTURE OF CONSULTATIVE BODIES (CBs)



WHAT'S NEW IN GOECB?

Changes	Details
Term of Office	3 years for a max of 2 consecutive terms
Renaming of CBs	CBs are the umbrella term for the National Sectoral Committees (NSCs) and AFCs; National Banner Program Committees (NBPCs) and Other Priority Program Committees (OPPCs) are renamed as the NSCs
Organizational Structure	Reinstitution of Barangay AFCs; Agricultural and Fishery Youthpreneur Councils (AFYCs) are relegated to committees in every NSC and AFC, hence renamed as the Committee on Youth in Agriculture and Fisheries
NAF Council	Creation of a Steering Committee (SC) that will serve as a clearing house for policy resolutions
Award and Recognition Programs	Inclusion of a section on the award and recognition programs for NSCs and AFCs
Election Process	Creation of electoral board per NSC and Regional & Local AFC; New guidelines, which will include filing of certificate of candidacy, to be determined by electoral board
Membership Process	Organizations interested to join the AFCs must comply with all membership requirements, regardless of status of accreditation from the DA <i>*See back for the criteria and membership requirements</i>

CRITERIA FOR MEMBERSHIP

NSCs	AFCs
Duly organized and registered national associations or organizations / An individual who meets the requirements in accordance with the membership process set by PCAF	Filipino citizen, who possesses strong leadership qualities and is committed to serving voluntarily and supporting fully all activities of the Council
For organizations: Presence of organizational structure with active national and local leadership and must be in existence for at least two years	An authorized representative of a bona fide agriculture and/or fisheries-related organization, including allied industries and services / An individual who meets the requirements in accordance with the membership process
Should be actively involved in the A&F policy advocacy/ implementation of A&F dev't programs, projects, or activities, and represents a broad membership base or affiliation	Familiar with the national and/or local A&F situation, including allied industries and services in their locality

REQUIREMENTS

For organizations

- Membership Application Form
- A certified true copy of Registration/ Accreditation/Business Permit with the appropriate agencies
- Organizational Profile
- Endorsement letter appointing an official representative and an alternate

For individuals

- Membership Application Form
- Certified true copy of business registration certificate, if applicable
- Endorsement letter from any private organization or government sector entity or by invitation by a Council member/Secretariat-Coordinator