

PHILIPPINE COUNCIL FOR AGRICULTURE AND FISHERIES

CREATION

Formed upon the consolidation of the National Agricultural and Fishery Council (NAFC) and the Livestock Development Council (LDC) in 2013

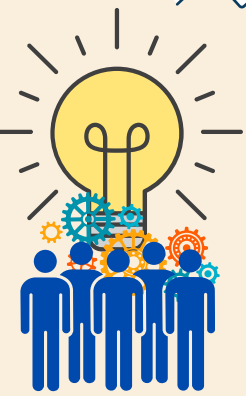
MISSION

In partnership with our Agricultural and Fishery Council, both national and local, and other stakeholders, we will zealously promote and strengthen capacities in participatory and collaborative governance

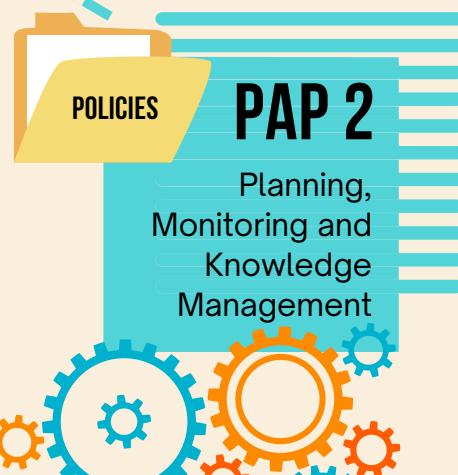
VISION

An apex policy-making body with strong, vibrant and visible private sector partners responsible for the attainment of a conducive policy environment towards a globally competitive and sustainable agriculture and fisheries sector.

acts as the participatory development hub of the Department of Agriculture



NAF COUNCIL
AGRICULTURAL AND FISHERY COUNCIL
NATIONAL SECTORAL COMMITTEES



MAJOR FINAL OUTPUT (MFO)
are goods or services mandated to primarily deliver to the bureaucracy and the general public external client through the implementation of programs, activities and projects (PAPs)

PROGRAMS, ACTIVITIES AND PROJECTS (PAP)
these contributes or drive the attainment of the MFO

EXECUTIVE OFFICE

oversees PCAF's **four** division and its sections. It is composed of the Executive Director and Deputy Director.



POLICY DEVELOPMENT AND COORDINATION DIVISION



Council Support
Coordination Section



Sectoral Policy
Development Section



Agricultural and Fisheries
Mechanization and
Infrastructure Support Section



Strategic Concerns
Section

PARTNERSHIP DEVELOPMENT DIVISION



Social
Mobilization
Section



Capacity
Development
Section



Volunteer
Management
Section

PLANNING, MONITORING AND KNOWLEDGE MANAGEMENT DIVISION



Planning and
Programming
Section



Project
Development
Section



Monitoring and
Evaluation
Section



Knowledge
Management
Section

ADMINISTRATIVE, FINANCIAL AND MANAGEMENT DIVISION



Accounting
Section



Budget
Section



Cash
Section



General
Services
Section

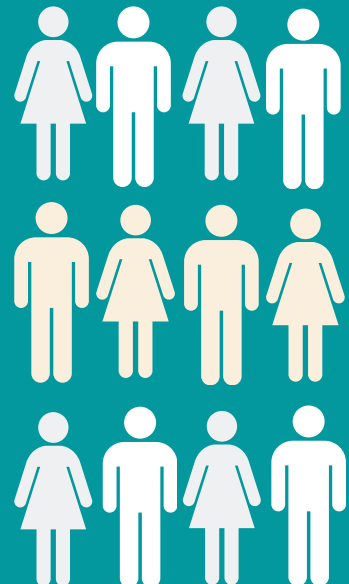


Management
Section



Human Resource
Development Section

EMPLOYEES PROFILE



90

APPROVED
PLANTILLA
POSITIONS

62% FEMALE

38% MALE

51 PCAF-BASED
CONTRACT OF
SERVICE

19 REGIONAL-BASED
CONTRACT OF
SERVICE

AS OF APRIL 1, 2024 | SOURCE: PCAF-HRDS



Apacible Hall,
Department of Agriculture
Compound, Elliptical Road,
Diliman, Quezon City



www.pcaf.da.gov.ph



pcafofficial@pcaf.da.gov.ph



DA.PCAF



DA_PCAF



(02) 8920-4093 (02) 8920-4095

Special Issue of



Volume No. 7, Issue #2 Dec 2023
2nd revision 2024